



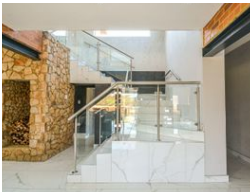
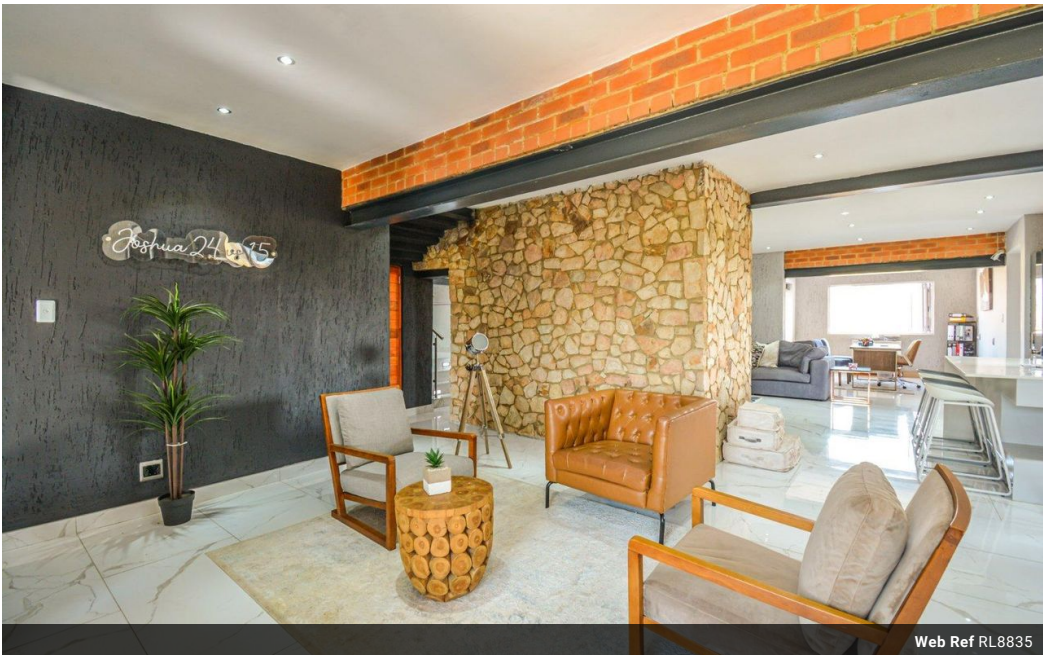
Belinda Willemse
082 924 0464
belinda@mandated.co.za

Contact Mandated Property Group

010 1094750

Thornhill Office Park
Building 10
84 Bekker Rd
Vorna Valley
Midrand
1686

5 Bedroom House For Sale in Summer Place Estate



R3,600,000

5 5 1

Monthly Bond Repayment R37,158.78
Calculated over 20 years at 11% with no deposit.
Transfer Costs R232,714.00 **Bond Costs** R47,840.00
These calculations are only a guide. Please ask your conveyancer for exact calculations.
Monthly Levy R1,475 **Monthly Rates** R800

Exquisite Family Home Awaits

Welcome to Summer Place Estate—a tranquil haven where modern living meets nature. This newly built double-story gem is more than just a house; it's your dream home. Step inside and be captivated by the thoughtful design, featuring facebrick accents, steel bulkheads, and warm wooden finishes that create a perfect blend of style and comfort. With two separate living areas, fireplaces, and five bedrooms, this home adapts effortlessly to your family's needs. Hosting guests or accommodating extended family is never a problem, as the layout is designed to offer versatility. Upstairs, stacking doors open to breathtaking pool views, offering a serene space to unwind after a busy day. The heated swimming pool, adorned with a beautiful water feature, sets the stage for hosting gatherings, while stone cladding and a thoughtfully planned...

Pets Allowed		Yes			
Interior		Exterior		Sizes	
Bedrooms	5	Garages	1	Floor Size	520m²
Bathrooms	5	Carports / Parkings	2	Land Size	873m²
Kitchens	2	Security	Yes		
Recep. Rooms	3	Pool	Yes		
Studies	1	Views	True		
Furnished	No				

Extras
Entrance Hall Steel Bulkheads Steel Bulkheads Wooden Finishes Fireplace Stacking Doors
Staking Windows Heated Swimming pool Water Feature With Stone Clading Cammera System
Eye Level Oven Gas Hob Breakfast Bar Double Storey Aquatic Activities Riverfrontage Ceiling
Fans Built in Wardrobes En Suite Build In Lofts Undercover Balcony Communal Pool Estate
Fishing Estate Security Estate Communal Braai Area Communal Boat lanch

