



Suzette Mann
083 226 0131
suzette@mandated.co.za

Contact Mandated Property Group

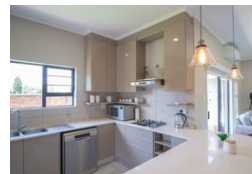
010 1094750

Thornhill Office Park, Building 10
84 Bekker Rd, Vorna Valley
Midrand, Gauteng, 1686

3 Bedroom House For Sale in Kyalami Hills



Web Ref RL5071



R2,990,000

3 2.5 2

Monthly Bond Repayment R30,355.35

Calculated over 20 years at 10.75% with no deposit.

Transfer Costs R159,255.00 **Bond Costs** R42,185.00

These calculations are only a guide. Please ask your conveyancer for exact calculations.

Monthly Levy R2,970 **Monthly Rates** R1,700

Immaculate 3 bed family home in a secure estate.

Madison Manor at Waterfall is the ideal place for Modern families, young professionals and investors.

This contemporary home is thoughtfully designed to provide the perfect balance of comfort and style, ensuring a harmonious living environment.

Your safety and Security are top priority, rest easy. knowing that this development is encompassed by electric fenced perimeters, gated access control and 24-hour guard security.

Nested in a vibrant neighborhood of Kyalami Hills.

This 3 Bedroom 2-bathroom cluster has so much to offer.

Open plan living with modern finishes, fully tiled.

Modern kitchen with a gas stove and ample cupboards and has a scullery..

Open plan dining and lounge that flows through to a braai area and private garden.

Double automated garage,

Inverter.

Club house, pool and playground in the estate.

Situated in a...

Pets Allowed Yes

Interior	
Bedrooms	3
Bathrooms	2.5
Kitchens	1
Recep. Rooms	2
Furnished	No

Exterior	
Garages	2
Carports / Parkings	2
Security	Yes
Pool	Yes
Views	False

Sizes	
Floor Size	175m ²
Land Size	1,560,000m ²

