



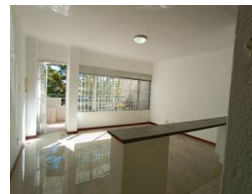
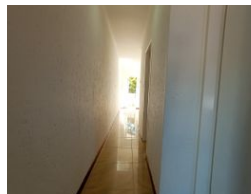
Nalphy Lesoma
082 900 4552
nalphy@mandated.co.za

Contact Mandated Property Group

010 1094750

Thornhill Office Park
Building 10
84 Bekker Rd
Vorna Valley
Midrand
1686

1 Bedroom Apartment To Let in Sandown



R8,500 pm

🛏 1 🚿 1

Lease Period 12 months
Annual Escalation -
Lease Excludes:
Water and Electricity

Availability Immediately

Deposit R8,500

MORDEN 1 BEDROOM APARTMENT TO LET IN THE HEART OF SANDTON - CONVENIENCE - PRIME LOCATION

Welcome to St Tropez – a sought-after complex ideally located in the heart of Sandown, within walking distance of Sandton City, the Gautrain station, and a variety of popular restaurants and retail outlets. This modern, 1-bedroom apartment offers a stylish and convenient living space perfect for professionals and corporate tenants.

The apartment features a bright, living area that opens onto a private balcony overlooking the sparkling swimming pool below; – an inviting spot to relax and enjoy. The open-plan layout includes a modern kitchen with a breakfast nook granite countertops, ample cupboard space.

The bedroom serves as a quiet and private retreat, complete with generous built-in cupboards and a full bathroom that includes both a bath and shower.

St Tropez offers excellent 24-hour security, a communal swimming pool,...

Interior

Bedrooms	1
Bathrooms	1
Kitchens	1
Recep. Rooms	2
Furnished	No

Exterior

Carports / Parkings	1
Security	Yes
Pool	Yes
Views	True

Extras

24 Hour Access Balcony Bath, Toilet and Basin Breakfast Nook Built in Wardrobes Communal Braai Area Complex Curtain Rails Electric Gate Electric Fencing Fibre Granite Tops Guard House Guard Lighting Immaculate Condition Open Plan Kitchen Near Bus Service Near Train Service Oven And Hob Accommodation Shower Safe Near Mini Bus Service Secure Parking Stove Sliding Doors Tiled Floors Under Counter Oven Burglar Bars Washing Machine Connection Open Plan Modern

